

State of Wyoming Corner Record

(In compliance with the CORNER PERPETUATION AND PILING ACT, Wyoming Statutes, 1997 Section 33-29-140 et. seq., and the Rules and Regulations of the Board of Professional Engineers and Professional Land Surveyors)

Reverse side of this form may be used if more space is needed.

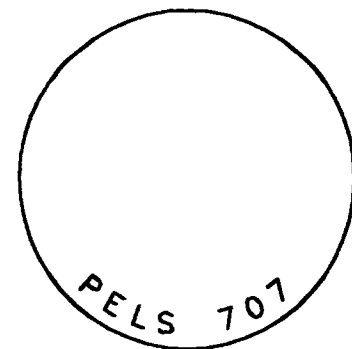
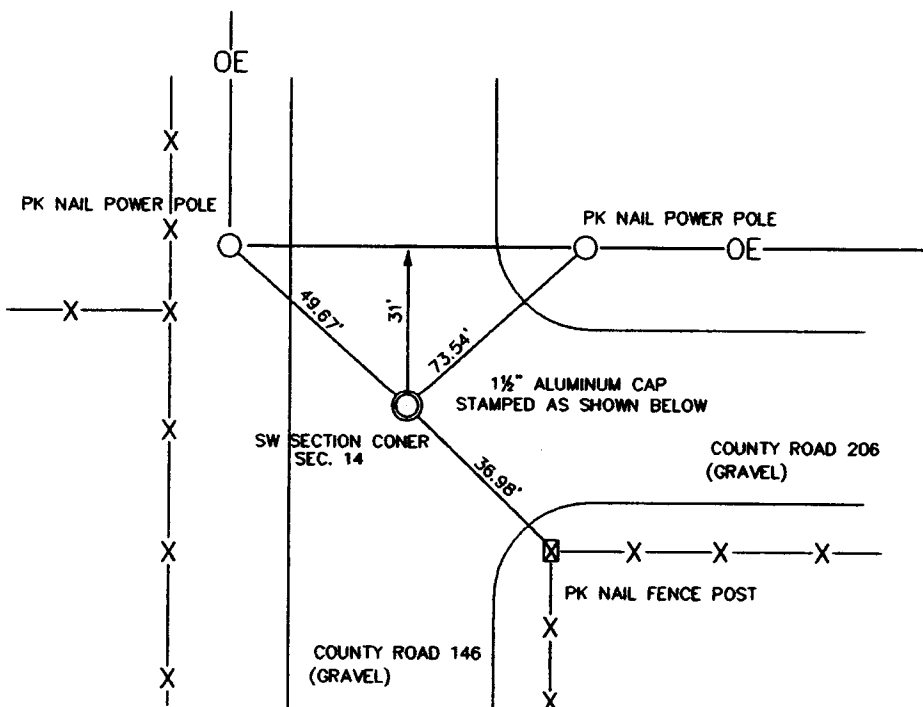
Record of original survey and citation of source of historical information (if corner is lost or obliterated). Description of corner monumentation evidence found and/or monument and accessories established to perpetuate the location of this corner. Sketch of relative location of monument, accessories, and reference points with course and distance to adjacent corner(s) (if determined in this survey). Method and rationale for reestablishment of lost or obliterated corner.

RECORD: UNKNOWN

MONUMENT FOUND: A 1½" ALUMINUM CAP NO MARKINGS.

MONUMENT SET: NONE

REFERENCES: MONUMENT LIES IN CENTER LINE OF COUNTY ROAD 146 AND 206. FOUND PK NAILS IN POWER POLES AND FENCE CORNER POST.

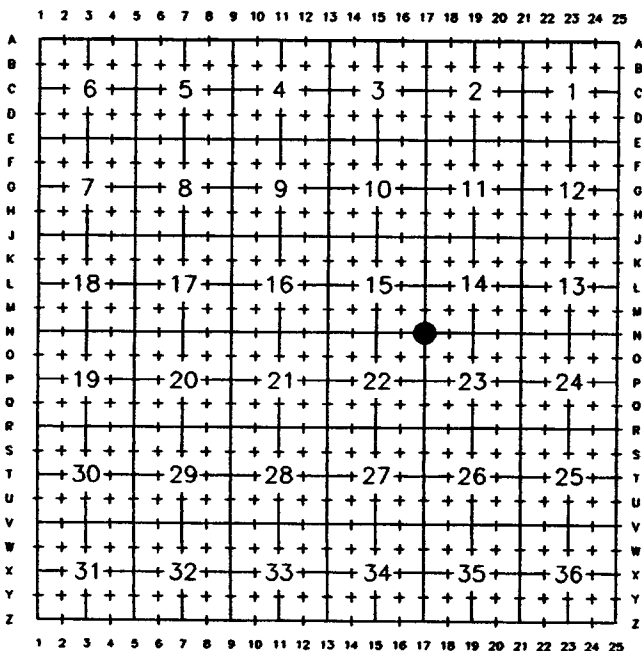


Date of Field Work: 4/14/98

Office Reference: 98108

Monument Inscription

Cross Index Plat

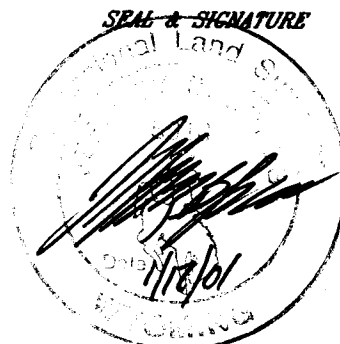


Firm/Agency, Address

STEIL SURVEYING SERVICES, LLC.
 1102 WEST 19th STREET
 CHEYENNE WY 82001

Telephone Number: (307) 634-7273

This corner record was prepared by me or under my direction and supervision.



Corner Name SW SECTION Corner Section 14, T 13 N, R 63 W, 6th P.M.

Cross-Index No.: N-17

County: LARAMIE Wyoming

SBRPEPLS/PLSW: March 1994; PLSW January 1998

RECORDED 4/05/2001 AT 8:41 AM REC# 292185 X# 1585 PG# 16
 DEBRA K. LATHROP, CLERK OF LARAMIE COUNTY, WY PAGE 1 OF 1